

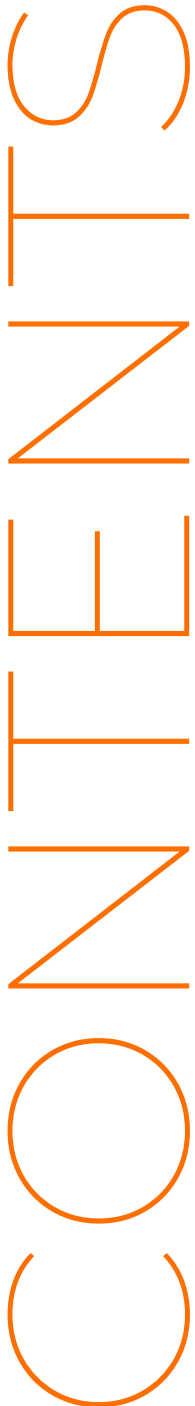


YOUR TRUSTED SEALING SPECIALIST
SINCE 2002

GSK Products Catalogue

61 KAKI BUKIT AVE 1,
#03-35 SHUN LI IND PK,
SINGAPORE 417943
T: 6844 6882
F: 6844 6869

Table of Contents



01.

Acrylics, Adhesives & Other
Fillers

02.

PU & Modified Sealant

03.

Weather & Structural Glazing
Sealant & Tapes

04.

Firestop Solutions

05.

Waterproofing Membranes

06.

Backing Material & Other
Foams

07.

Metal Plates & Accessories

08.

Miscellaneous tools

ACRYLICS & ADHESIVES

01

AS-606 Siliconised Acrylic Gap Filler

AS606 is a high performance acrylic sealant reinforced with silicone emulsion. It has superior adhesion and good elasticity and it is paint-able. *Suited for sealing air conditioning and HVAC ducting systems.

Suitable use on: wood, concrete, glass, ceramic, granite and marble, etc.

Paintable
Movement: 15%
24 cartridge x 550g
White



02

MC-800 Latex Acrylic Gap Filler

MC-800 is a one-part paintable, water base acrylic sealant. It will cure and form a flexible tough rubber.

Suitable use on: wood, concrete, glass, ceramic, granite and marble, etc.

Paintable
Movement: 12%
24 cartridge x 480g
White



03

MC-808 Colofil Latex Acrylic

MC-808 Colofil Multi-Colour Acrylic Gap Sealant is a one-part paintable, gun-applied, acrylic sealant that comes in a range of multi-colour to match most applications.

24 cartridge x 480g
13 colors
(Refer to color chart)



04

X'Bond Construction Adhesive

X'bond Construction Adhesive Sealant provides a high strength, water resistant bond for a wide variety of construction materials including wood, plaster wood, mirror, masonry, aluminum, galvanized iron, steel, concrete, fabric cement sheeting, wall and floor paneling.

24 cartridge x 480g
12 colors
(Refer to color chart)



05

Cyanoacrylate Super Glue

Super Glue is a colorless, strong, easy to use instant adhesive that bonds well both porous and non porous materials.

Use for bonding of glass, plastic, metal leather concrete, fabric, etc.

50 bottles x 20g
Clear



ADHESIVES & MISC.

01

CA-288 Contact Adhesive

CA-288 Contact Adhesive is a multi purpose solvent based chloroprene contact adhesive that is easy to apply and offers extra bonding strength. Use for bonding and laminating formica, plywood, cloth, cardboard, sponge, wood, leather, rubber, glass, metal, concrete, ceramic, plastic and others.

24 cans x 750ml
6 tins x 3kg
1 tin x 15kg



02

B52 Penetration Lubricant

B52 Penetrating Oil is a fast acting penetrating lubricant for loosening of rusted parts, lubricating hard to reach areas, acts as a corrosion protector of all metals and also as a general lubricator for all types of equipment and tools.

12 tins x 200ml



03

MC-235 Primer

X'traseal MC-235 Construction Primer is a clear solvent base primer formulated from special resin material to improve the adhesion of ms polymer sealants when applied to porous substrates (especially concrete). It's supplied ready-to-use (no mixing required) and easily applied to clean and dry surface just prior to sealant application.

6 cans x 500g



04

Fillers (Wood, Snow, Putty)

Putty Filler is a ready-to-use filler for exterior and interior to fill cracks and level uneven surfaces.

Wood Filler is a water-based cellulose fiber ready-mixed, high performance filler that gives a tough and sandable surface after drying.

Snow Filler is a ready-mixed lightweight filler that will turn from pink colour when it is wet to white colour when it is dry. It is specially formulated for repairs walls and ceilings.

24 tubs x 300ml



GENERAL SILICONE

01

KB-51 Antifungal Kitchen & Bathroom Silicone (Neutral)

KB-51 is a 100% Neutral Silicone Sealant with excellent anti-fungal properties. Suitable for wet areas under high humidity and temperature conditions. It cures to form a durable, flexible, waterproof seal on most building materials.

24 cartridge x 300ml
Refer to color chart



02

SN-501 100% RTV Neutral Silicone Sealant

SN-501 is a one-part high performance 100% RTV Neutral Silicone Sealant. It is suitable for a wide range of sealing and glazing applications where durability and reliability is required. It has superior resistant to UV-Radiation, vibration and weathering.

24 cartridge x 300ml
Refer to color chart



03

SN-502 All Weather Sealant - Low Modulus

SN-502 All Weather Sealant - LM is a one part, construction grade, low modulus RTV Neutral Silicone Sealant.

24 cartridge x 300ml
Matte Black



04

SN-503 Multi-Purpose Neutral Silicone Sealant

SN-503 is a one part Neutral Oxime curing silicone sealant that is on-corrosive to metals. For multipurpose usage of general glazing and sealing applications.

24 cartridge x 300ml
Super Clear
Matte: White, Black, Grey



05

SA-103 Acetic All Purpose Silicone

SA-103 is a one part Acetic Curing Silicone Sealant that offers excellent adhesion, Weatherability, Elasticity and Primerless Adhesion to most material. For multipurpose usage of general glazing and sealing applications.

24 cartridge x 300ml
Clear, White, Black, Grey



COLOR CHART

01

KB-51 Antifungal Kitchen & Bathroom Silicone (Neutral)

KB-51 is a 100% Neutral Silicone Sealant with excellent anti-fungal properties. Suitable for wet areas under high humidity and temperature conditions. It cures to form a durable, flexible, waterproof seal on most building materials.



24 cartridge x 300ml
Refer to color chart



02

SN-501 100% RTV Neutral Silicone Sealant

SN-501 is a one-part high performance 100% RTV Neutral Silicone Sealant. It is suitable for a wide range of sealing and glazing applications where durability and reliability is required. It has superior resistant to UV-Radiation, vibration and weathering.

24 cartridge x 300ml
Refer to color chart



Standard



Black



White



Grey



Clear / Transparent

Special



Almond



Bronze



Dark Grey



Aluminium (Metallic)



Custom

Contact our sales team to find out more about the MOQ requirements (if any).

Address: 61 Kaki Bukit Ave 1, #03-35 Shun Li Ind Pk, Singapore 417943

Email: sales@gskadvance.com.sg

T: 6844 6882

F: 6844 6869

Web: www.gskadvanceservices.com

SPECIALTY COLORS

01

MC-228 Multi-Color Epoxy Gap Sealant

MC-228 is a German-formulated gap seal with high end cosmetic grade pigment. It consists of a nanotech-polymer and cures to form a sturdy, glossy and vibrant solid finish. Mildew and Waterproof. Fast Curing.

12 cartridge x 300ml
Refer to color chart



MS POLYMER / ADHESIVE & PU SEALANT

01 MS-603 Modified Polymer Adhesive / Sealant

MS-603 is based upon Hybrid Silyl Modified Polyether Technology with high bond strength and primerless adhesion on many types of substrates or moist surfaces. It can be painted with most kinds of paints and has superior weatherability in all climates. It is an ideal product for all in one indoor & outdoor bonding and sealing purposes.



02 MS-602 MS Polymer Sealant - Low Modulus

MS-602 is based upon Hybrid Silyl Modified Polyether Technology. It is a neutral, single component, low modulus with high movement capability joint sealant with outstanding bond strength and primerless adhesion on various types of substrates. It is a high performance flexible elastic sealant suitable for all kinds of applications and conditions.



03 MS-609 MS Polymer Heavy-duty Adhesive / Sealant - X'Grip

MS-609 is a Hybrid Silyl Modified Polyether technology based high grip one component strong adhesive. It is suitable for direct bonding on a wide range of heavy construction materials without support and able to hold up to 13 kg weight.



MS POLYMER / ADHESIVE & PU SEALANT

01

Multiseal Universal Sealant & Adhesive

Multiseal is based upon Hybrid Silyl Modified Polyether Technology with high bond strength and primerless adhesion on many types of substrates or moist surfaces. It can be painted with most kinds of paints and has superior weatherability in all climates. It is an ideal product for all in one indoor & outdoor bonding and sealing purposes.



02

P635 Polyurethane (PU) Sealant

Akfix P635 is a one-component, medium-modulus polyurethane sealant that cures on exposure to atmospheric humidity. It possesses excellent adhesion to all typical construction materials such as cement based materials, brick, ceramic, glass, wood, galvanized and painted sheet iron and various plastics.



FOAMS

PU Foam



PU Foam Insulation & Construction Foam is a fast curing construction foam based on moisture curing polyurethane, contains safety propellant and with excellent gap filling capability. For filling joints/gaps between walls, ceiling, floor, window and door frames etc.

750ml x 12 cans

805P Multi Purpose PU Gun Foam



Akfix 805P is a one-component, moisture curing, self expanding, ready to use PU Foam and features excellent adhesion and gap filling capacity, with high thermal & acoustic insulation. Conforms to B3 fire rating and cures with the atmosphere.

850ml x 12 cans

820 B1 Fire rated PU Foam



Akfix 820, is a one-component, moisture curing, self expanding, ready to use polyurethane foam with propellants which are completely harmless to ozone layer. It has a fire rating of up to 217 minutes in certain configurations.

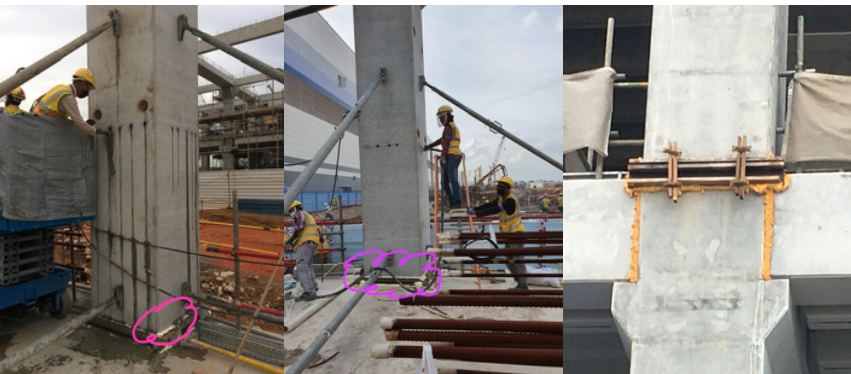
850ml x 12 cans

FOAM
GUN
B1

ON-SITE USE CASES

Permanent Gap Filler

A cheap and fast curing gap, joint and cavities sealer between precast, wall penetration, electrical outlets, water pipes, door and window frames



Formwork & Casting

A cheap and temporary, fast curing gap sealer



An fast drying temporary or permanent seal to fill and cover gaps during casting and formwork.



A simple and effective method for a watertight seal and insulation in window Frames

PU FOAM

Watertight seal in Window frames

An easy to apply and fast curing insulation and water resistant barrier for the use in door and window frames.



PROJECT REFERENCE

Jurong West N2C17 & C18

Type: HDB Residential
Year: 2013

Punggol East C39B

Type: HDB Residential
Year: 2014

Choa Chu Kang N8C4

Type: HDB Residential
Year: 2014

Kallang Whampoa C28B

Type: HDB Residential
Year: 2016

Westwood EC

Type: Private Residential
Year: 2018
Architect: ADDP Architects

Northwave EC

Type: Private Residential
Year: 2018
Architect: Design Link Architects

Micron Fab 10A

Type: Industrial
Year: 2021
Architect: ID Architects
Main con: Exyte

Jadescape

Type: Private Residential
Year: 2021
Architect: Ong & Ong
Main con: Welltech

The Cristallo

Type: Private Residential
Year: Completed
Architect: Park + Associates
Main con: SinoTac Builder's

Seahill

Type: Private Residential
Year: Completed
Architect: RDC Architects

Riversails

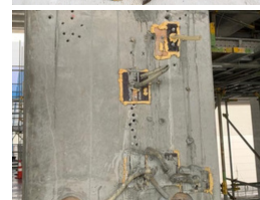
Type: Private Residential
Year: Completed
Architect: Design Link Architects
Main con: China Construction (SP)

Michaels' Residence

Type: Private Residential
Year: Completed

Gambir Ridge

Type: Private Residential
Year: Completed
Architect: JGP Architecture (S)
Maincon: SinoTac Builder's



Please refer to the project reference list for the exhaustive project list.
Pictures used are fully owned by GSK Advance Services.

PREMIUM GLAZING SILICONE

01

SG300 Structural Silicone Sealant

SG300 is a premium structural silicone sealant. It is a versatile, high performance single component silicone sealant which reacts with atmospheric moisture to produce a flexible silicone rubber, ideal for a wide variety of general purpose joint sealing and glazing applications.

Movement: 25%
20 sau x 600ml
Black, Grey



02

SG555 Non-Stain Silicone Sealant

SG555 is a premium non-stain, non-bleed weather silicone sealant. It is a single component neutral curing low modulus silicone sealant with good mechanical resistance and adhesion to most porous and non-porous substrates.

Movement: 50%
20 sau x 600ml
Black, Grey, Aluminium, White



03

SG558 Premium Weather Silicone Sealant

SG558 is a premium one component sealant versatile weather silicone sealant. It is for use in applications where a high degree of joint movement is anticipated such as in structurally glazed curtainwall, aluminium cladding, expansion joints and external perimeter joints.

Movement: 50%
20 sau x 600ml
Black, Grey, White



04

SG200 2-part Structural Silicone Sealant

SG200 - Proglaze® II is a multi-component, high-modulus silicone sealant consisting of a white base and a black curing agent that, when mixed through a pump, cures to a tough, flexible rubber.

Part A: 250 kg drum
Part B: 19 kg pail
Black



05

Spectrem 2

Spectrem® 2 is a high-performance, single-component, neutral-cure, medium-modulus silicone sealant. It is resistant to driving rain, ozone, ultraviolet light, and temperature extremes. It safeguards against water penetration with exceptional weatherability in all climate zones.

Movement: 50%
20 sau x 600ml
Black, Grey, White



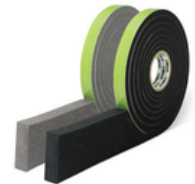
SPECIALTY TAPES

01

Structural Glazing Spacer Tapes

Tremco SG635 is designed to give a specific gap thickness for structural silicone in structural glazing systems. The open cell nature of the foam allows curing of structural silicones.

*Please enquire with your sales representative for the packing and sizes.

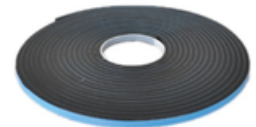


02

TP600 Compriband Tapes

TP600 is an impregnated joint sealing tape for use in a wide variety of movement joints including window perimeter seals and other applications. It is a soft and flexible open cell polyurethane foam, impregnated with an acrylic based, UV stabilised resin. The resin is water repellent and contains a fire retardant. It is weather tight against the most severe combinations of wind and rain.

*Please enquire with your sales representative for the packing and sizes.



”

Pre-compressed,
self-adhesive rolls
for easy
weatherproofing
sealing

Pictures are fully owned by GSK Advance Services

SPECIALTY TAPES

03 ME220 VV EPDM Membrane (Self-adhesive)

ME220 VV EPDM Membrane is used for sealing the connecting joint between a window/curtain wall and an adjacent structure for air and weather tightness. It has excellent movement capability, weathering, ageing and UV Radiation resistivity, moisture vapor barrier, and high resistance to mechanical damage.

**Please enquire with your sales representative for the packing and sizes.*



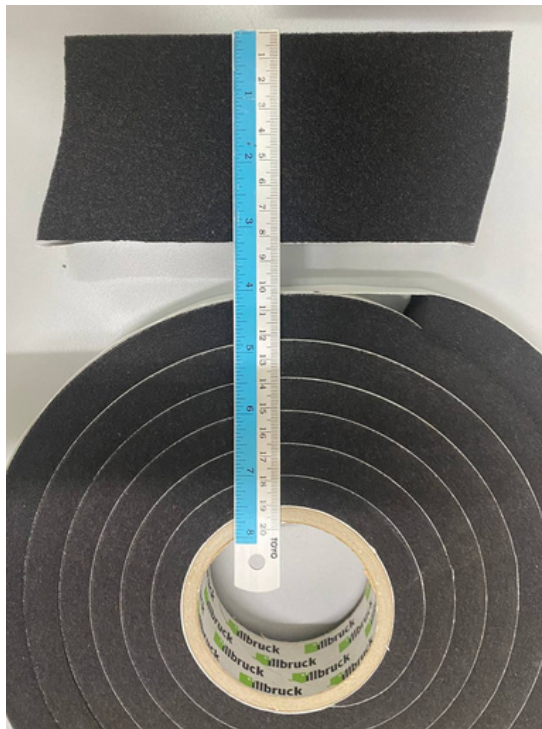
04 ME480 Butyl Tape BB (Fire Class B-S1,d0 to EN13501-1)

Designed for construction applications where high fire retardant performance is required. Provides permanent water tightness, air tightness, compartmentalization, and can be used for repairs of vapour-impermeable joint and seals in construction applications.

**Please enquire with your sales representative for the packing and sizes.*



SPECIALTY TAPES



A simple and effective method for a watertight seal and insulation for Movement Joints

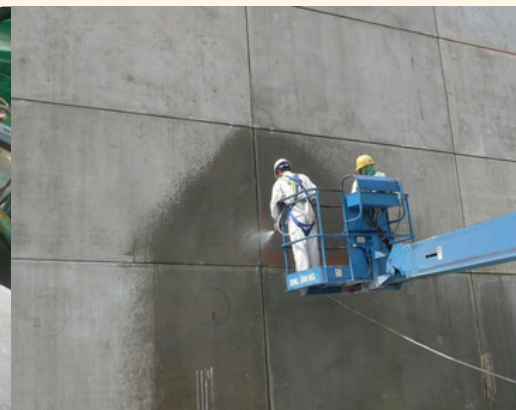
Picture is fully owned by GSK Advance Services



TP-600

Sealant-less solution for Gap Joints

A pre-compressed roll with self-adhesive side for easy and fast curing sealing.
For use as external weather seal for window perimeter, concrete mortar joints, and for thermal and acoustic insulation.



Picture above is our sealant-less solution: TP-600 Compriband Tapes, ME220VV EPDM Membrane with Self-adhesive, and/or ME480 Butyl Tape (for Fire retardant requirements)

Please contact your sales representative to enquire.

WATERPROOFING

01

Bituminous Waterproofing Strip Foam

Bitumen Impregnated Compressible Foam Filler is commonly used for dust / water / pest proofing, sealing, noise & vibration isolation.

50pc/ctn
Black

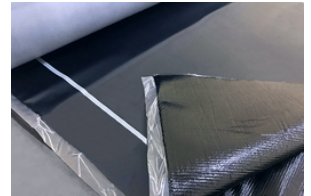


02

Ultraflex SA 7000-X Self-adhesive Bituminous Waterproofing Membrane

Self-adhesive carrier less SBS-modified bitumen membrane ULTRAFLEX SA 7000-X is designed for waterproofing of foundations and engineering structures with the additional feature of radon protection. The membrane has record elongation characteristics and high dimensional stability.

1.5mm thick x 1m wide x
20M long per roll



03

Ultraflex SA 7000-X Bituminous Primer

Bitumen Primer Solvent Based is a ready to use material. It is a combination of oil bitumen and a specially selected organic solvents. It has a high penetration ability and short drying time.

18KG Pail



Pictures are fully owned by GSK Advance Services

BACKING MATERIAL & OTHER FOAMS

01

Backer Rod

Backer Rods are an ideal non-absorbent compressible sealant backing material. A chemically inert material that serves as an insulation and bond breaker to prevent 3-side adhesion between the sealant and substrate.

Dia (mm): 6, 8, 10, 15, 20, 25, 30, 35, 40, 45, 50

White, Grey



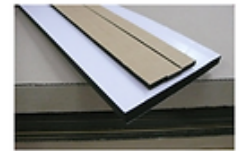
02

EVA Foam Tape

It features a flexible and compact cell foam to provide strong adhesion and shear strength for a variety of door and window uses.

Available in single and double sided tape.

Sizes can be customised



03

PE Sheet Foam

Closed cell polyethelyne (PE) sheet is an ideal non-absorbent compressible sealant backing material. It is chemically inert and water resistant for joint insertion to control depth and act as a bond breaker to prevent 3-side adhesion.

White



04

NBR Tape Foam

Single / Double Sided Adhesive tape foam for insulation, Weather stripping, Sound proofing, Door Seal, Pipe cooling, Sealing.

Sizes can be customised



METAL PLATES & RUBBER ACCESSORIES

01

Galvanised Metal Shim Plates

A galvanised iron levelling accessory for (PBUs) and Prefabricated Prefinished Volumetric Construction (PPVCs)

Dia (mm): 50 x 50

Thickness (mm): 1,2,5,10

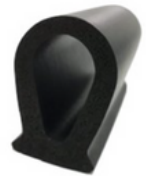


02

EPDM Foam Rubber / Gasket

The SRG series of EPDM sponge rubber gasket is a flexible dynamic seal for the prevention of air, water, cementitious grout material, etc. from leaking expansion and dynamic joints.

*Please enquire with your sales representative for size and customization requests.



03

Neoprene Rubber

A flexible dynamic pad to accommodate movements between pre-cast elements due to excellent shock absorption qualities. It is abrasion resistant and weatherproof.

*Please enquire with your sales representative for size and customization requests.



04

Setting Blocks

A hard rubber for to withstand the weight of heavy glass panels. Materials: Standard PVC, Silicone, EPDM Rubber, Santoprene

*Please enquire with your sales representative for size and customization requests.



PLASTIC ACCESSORIES

01

PVC Shim Plates

A PVC plate levelling accessory for precast elements

Dia (mm): 50 x 50, 50 x 25

Thickness (mm): 1,2,5,10
Black



02

Heavy Duty Protection Sheet

A flexible, resilient, and reusable sheet to protect the floor from damages and stains during construction. The waterproof and cushioned sheet can be cut and molded to protect various sizes, lengths and shapes.

03

PE Protection Sheet

A single use, economic polyethylene protection foam sheet to protect surfaces from damages and stains. The waterproof and cushioned sheet can be cut and molded to protect various sizes, lengths and shapes.

ACRYLIC SEALANT COLORS CHART

*This color chart is a guide only, colors may vary slightly.

Ultimate & Innovative Bonding Solution

MC-808 CÖLOFIL MULTI-COLOR ACRYLIC GAP SEALANT

• MATCH MOST FURNITURE MATERIALS COLOR

After Cure
Acrylic
Low Shrinkage

Acrylic
Non Crack

Smooth
Finishing

Easy Clean Up

BARLEY (COF02)	BEIGE (COF03)	WOOD (COF04)	CHERRY (COF06)	BROWN (COF07)
TEAK (COF08)	GREY (COF09)	BLACK (COF10)	FORESTWOOD (COF11)	COFFEE (COF12)
MOCCA (COF13)	WALNUT (COF14)	ASH OAK (COF15)	CARBON GREY (COF16)	

**Professional Manufacturer of
Sealants and Adhesives**

ABOUT GSK

Your trusted Sealant and Adhesive Specialist since 2002.

OUR BRANDS

x'traseal®

TREMCO

Akfix®
MASTER OF SOLUTIONS

OUR SERVICES

GSK ADVANCE SERVICES PTE LTD is the official distributor for your trusted sealing and adhesive solutions ranging from **TREMCO** Weatherproof Glazing solutions for facades, to **AKFIX** Precast Waterproofing, and **x'traseal** Carpentry Internal Finishing sealants, General weather silicone and adhesives.

GSK ASSOCIATE BUILDERS PTE LTD is a subsidiary representing our sealant application team for the scope of **sealant works and building maintenance works**, inclusive of but not limited to:
precast joint sealing, façade re-sealant works, façade sealing, fire-stop application.

Please check with our sales team for more information.

OUR VALUES

01

Committed and Effective

We are a one-stop sealing solutions provider to all your sealing needs.

02

Teamwork

Moving together brings the team further. Our customers are our valued partners and we believe in walking the distance together.

bizSAFE₃



ACKNOWLEDGEMENTS

Your trusted sealant and adhesives supplier since 2002.

We thank you for your continued support in our efforts to serve you.

CONTACT US

GSK ADVANCE SERVICES | GSK ASSOCIATE BUILDERS

61 Kaki Bukit Ave 1,
#03-35 Shun Li Ind Pk,
Singapore 417943

www.gskadvanceservices.com
sales@gskadvance.com.sg

T: 6844 6882

F: 6844 6864